



Company : Overseas Energy Holdings Ltd

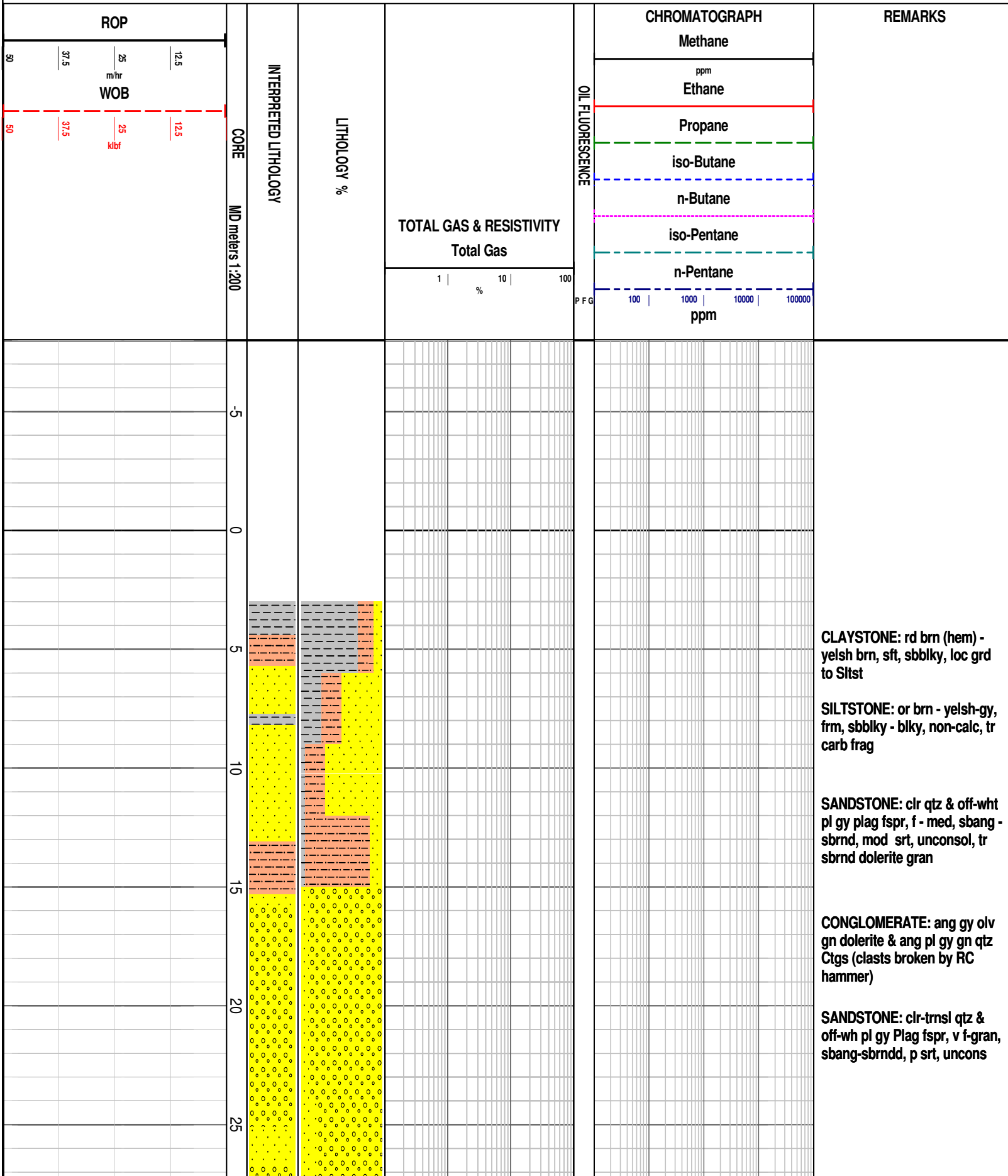
Well : Westwood 1

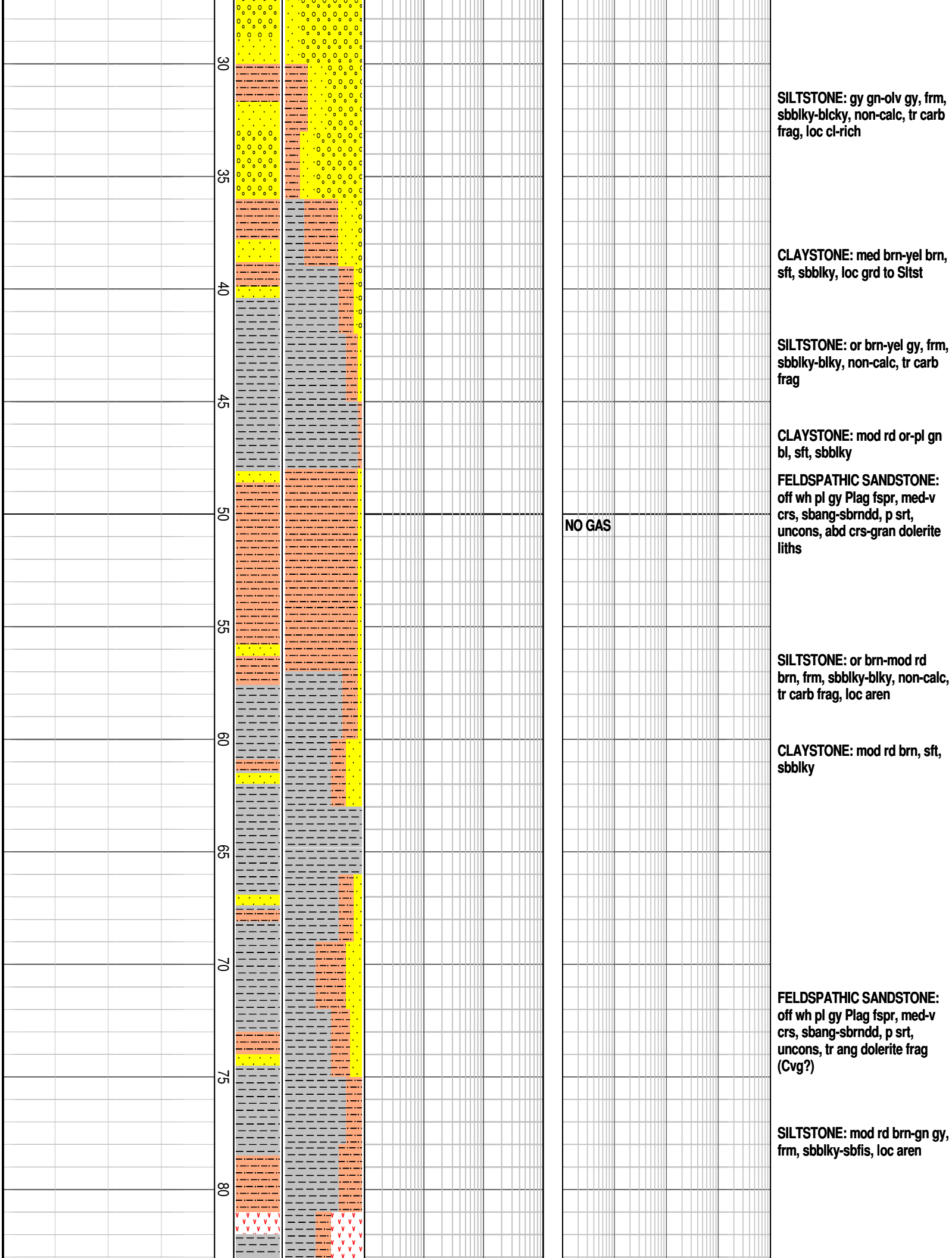
Interval : -8.00 - 838.44 meters

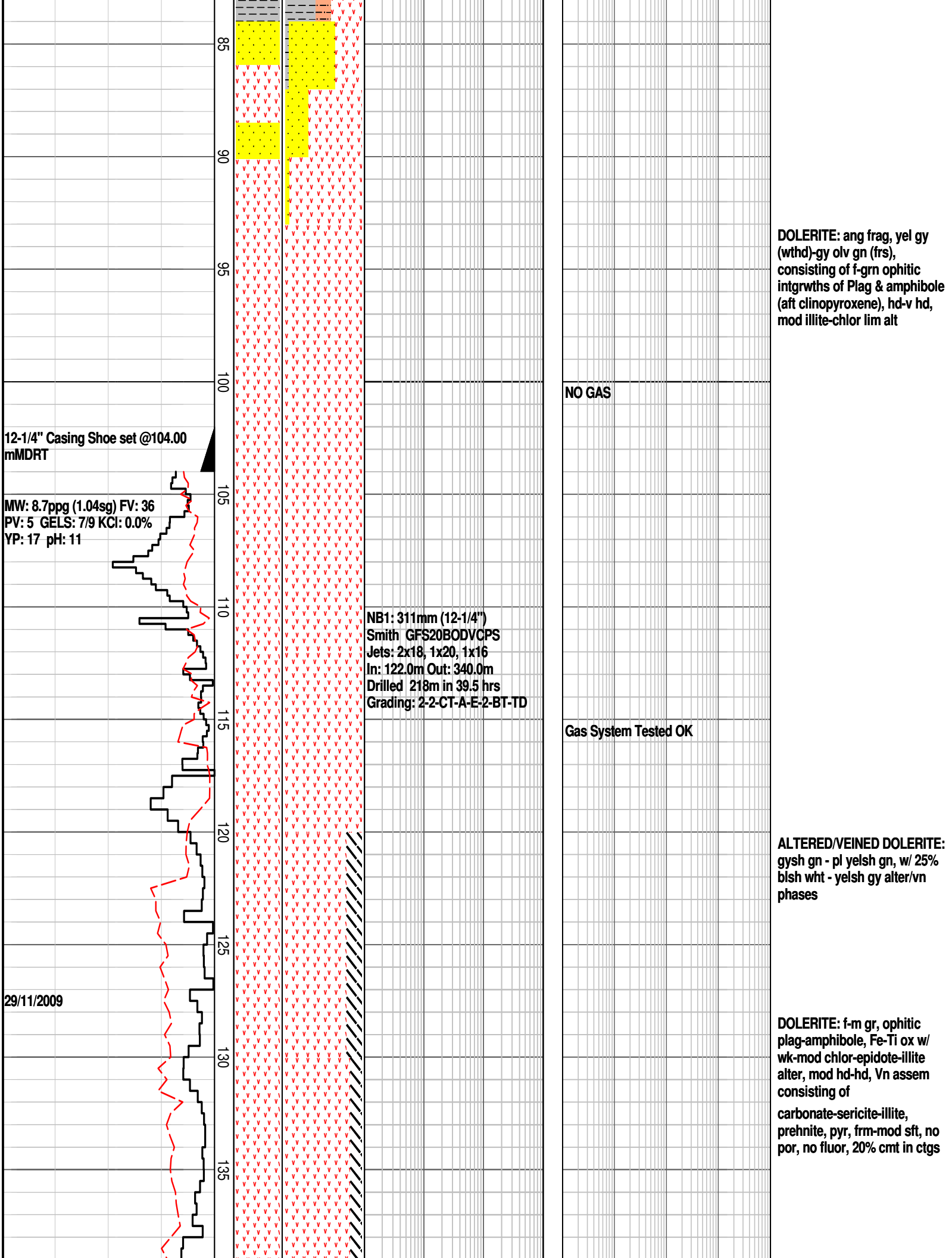
Created : 08/Dec/2009 8:37:54 AM

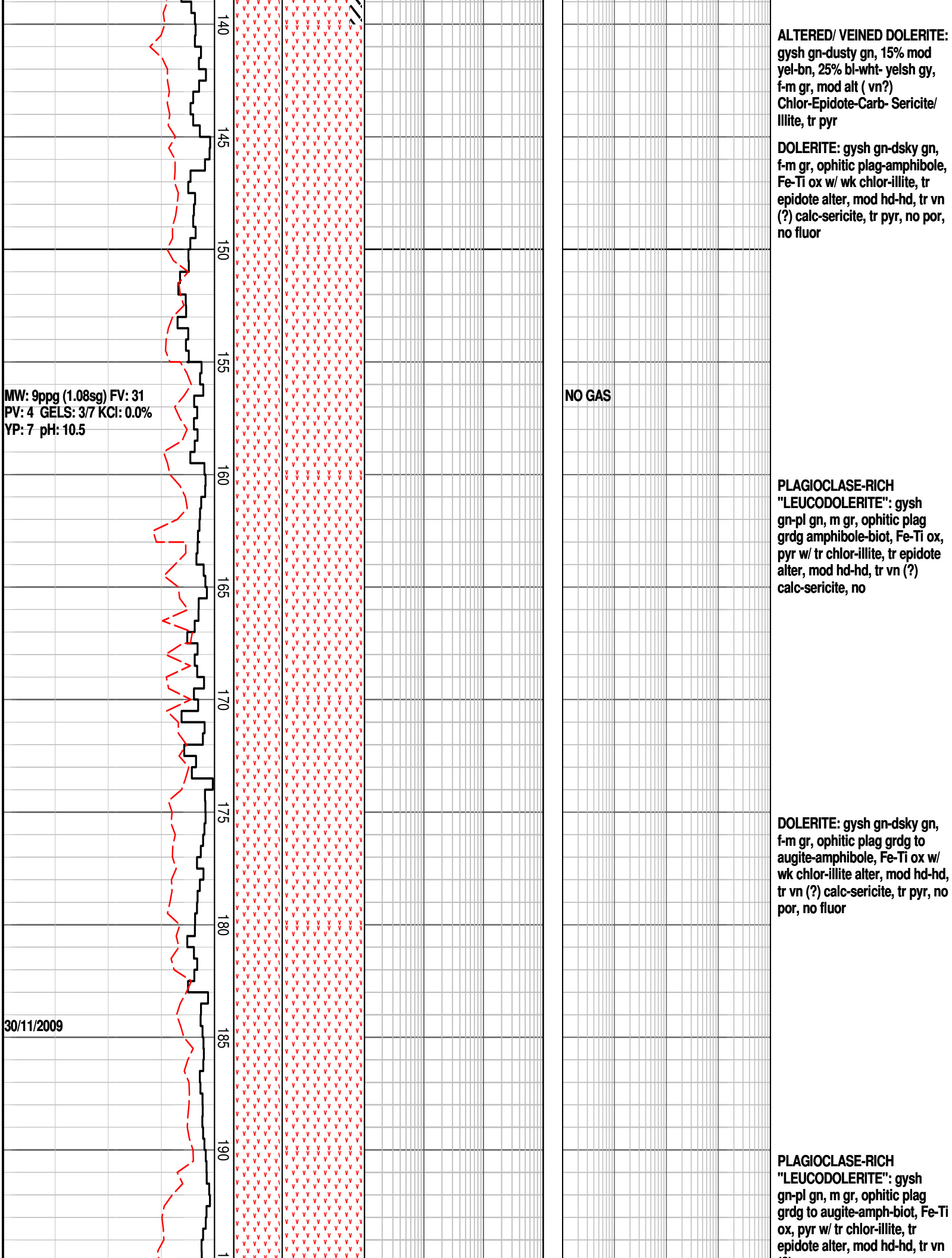
INTEQ

FORMATION EVALUATION LOG

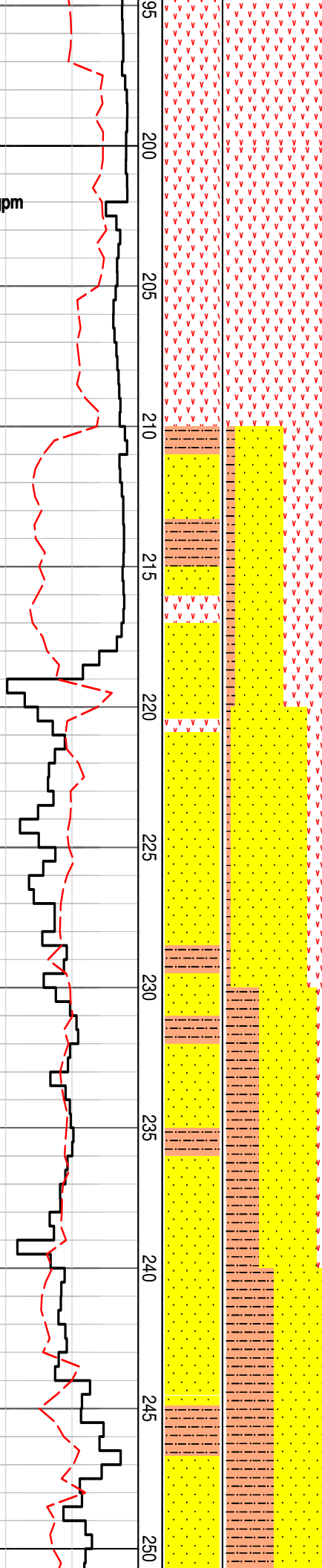








WOB: 2 - 34 klbf
RPM: 29 - 94
FLOW: 278 - 597 gpm
SPP: 256 - 563 psi



NO GAS

FG

(?)
calc-sericite, no fluor

SILTSTONE: mod yel,
blky-sbfiss, frm-mod hd

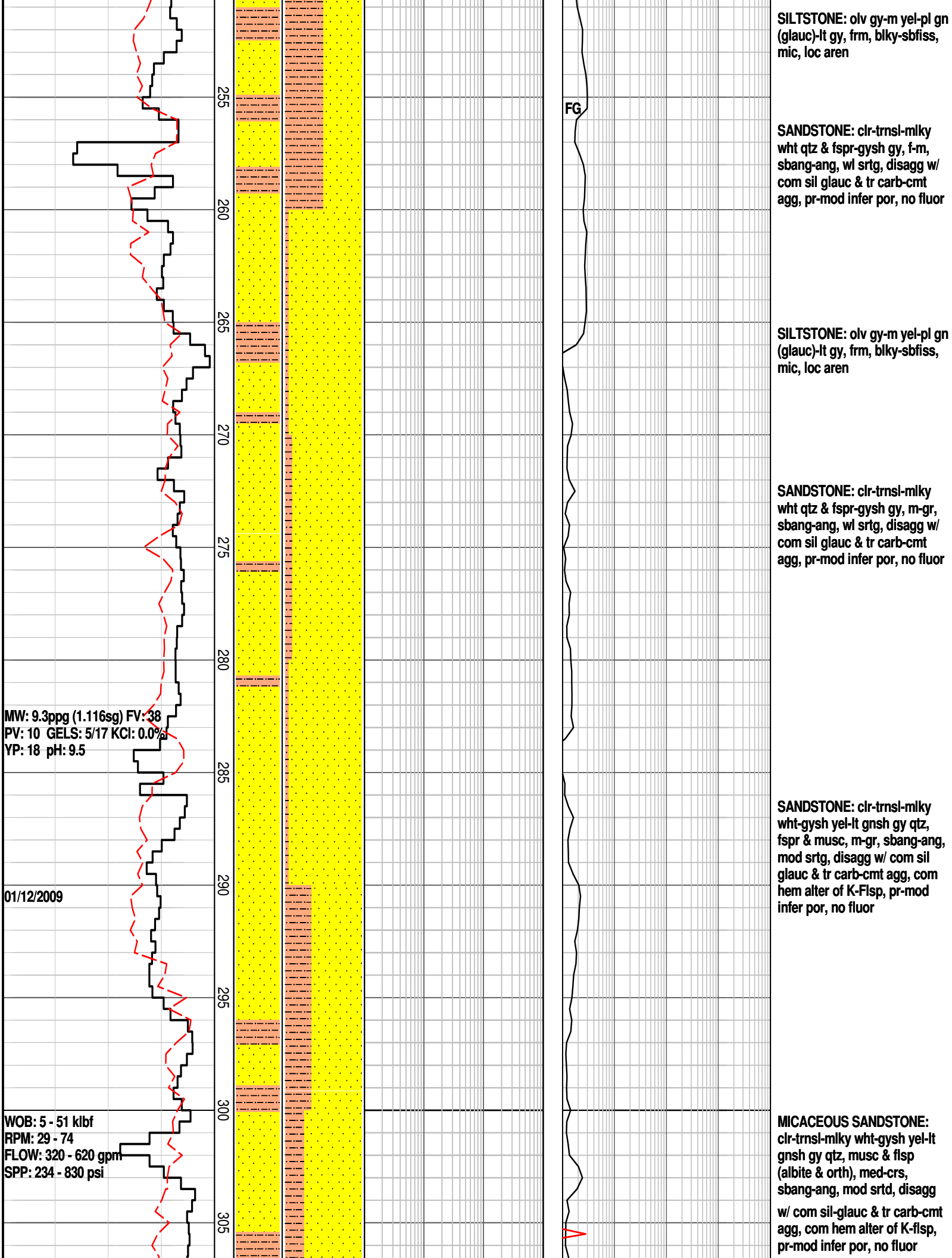
HORNFELS: yelsh gn-pl gn, vf,
epidote-chlor alter sltst chilled
dolerite

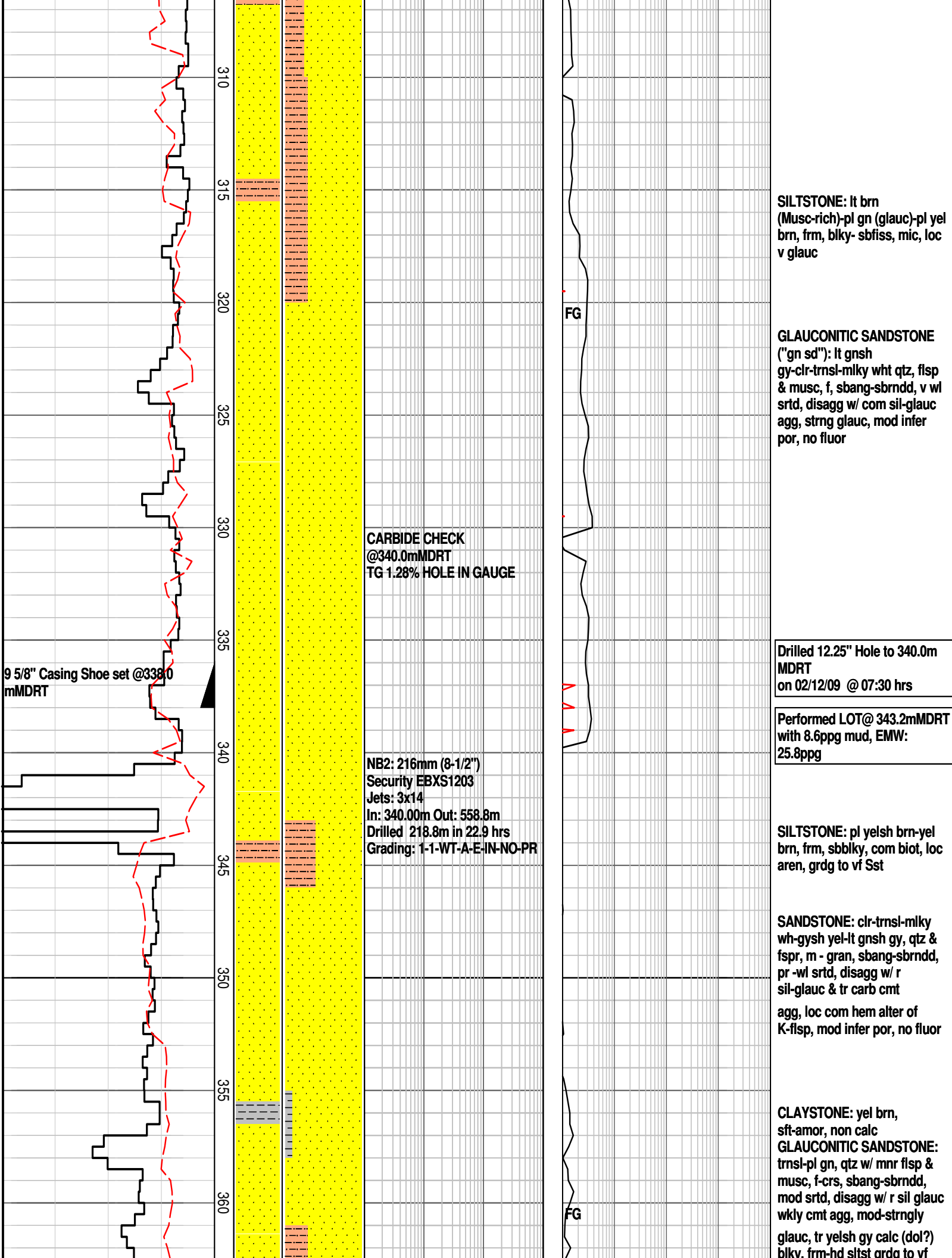
SANDSTONE: clr-trnsl-milky
wht qtz fspr, m-crs,
sbang-sbrnodd, mod-pr srtg,
disagg w/ occ sil & carb-cmt
agg, tr glauc, pr-mod infer por,
no fluor

DOLERITE: gysh gn-dsky gn,
f-m gr, ophitic plag-amphibole,
Fe-Ti ox w/ wk chlor-illite alter,
mod hd-hd, tr vn (?)
calc-sericite, tr pyr, no por, no
fluor

SILTSTONE: mod yel-pl yelsh
brn-pl gn (glauc)- lt gy,
blky-sbfiss, loc aren, carb frag,
sft-frm

SANDSTONE: clr-trnsl-milky
wht qtz & fspr, f-crs,
ang-sbrnodd, pr srtg, disagg w/
occ sil & tr carb-cmt agg, mn
glauc, pr-mod infer por, no
fluor





WOB: 5 - 42 klbf
RPM: 35 - 91
FLOW: 262 - 521 gpm
SPP: 238 - 758 psi

365 370 375 380 385 390 395 400 405 410 415

SANDSTONE mod infer por, no fluor
SILTSTONE: pl yelsh brn-yelsh gy, frm-hd, sbblky-blky, mod calc

CLAYSTONE: yel brn, sft-amor, wkly calc

SANDSTONE: clr-trnsl-milky wh-gysh yel-lt gnsh gy, qtz & mnr fspr, sbang-sbrnodd, wl srted, disagg, tr glauc, tr musc, tr sltst grdg to vf SANDSTONE, mod infer por, no fluor

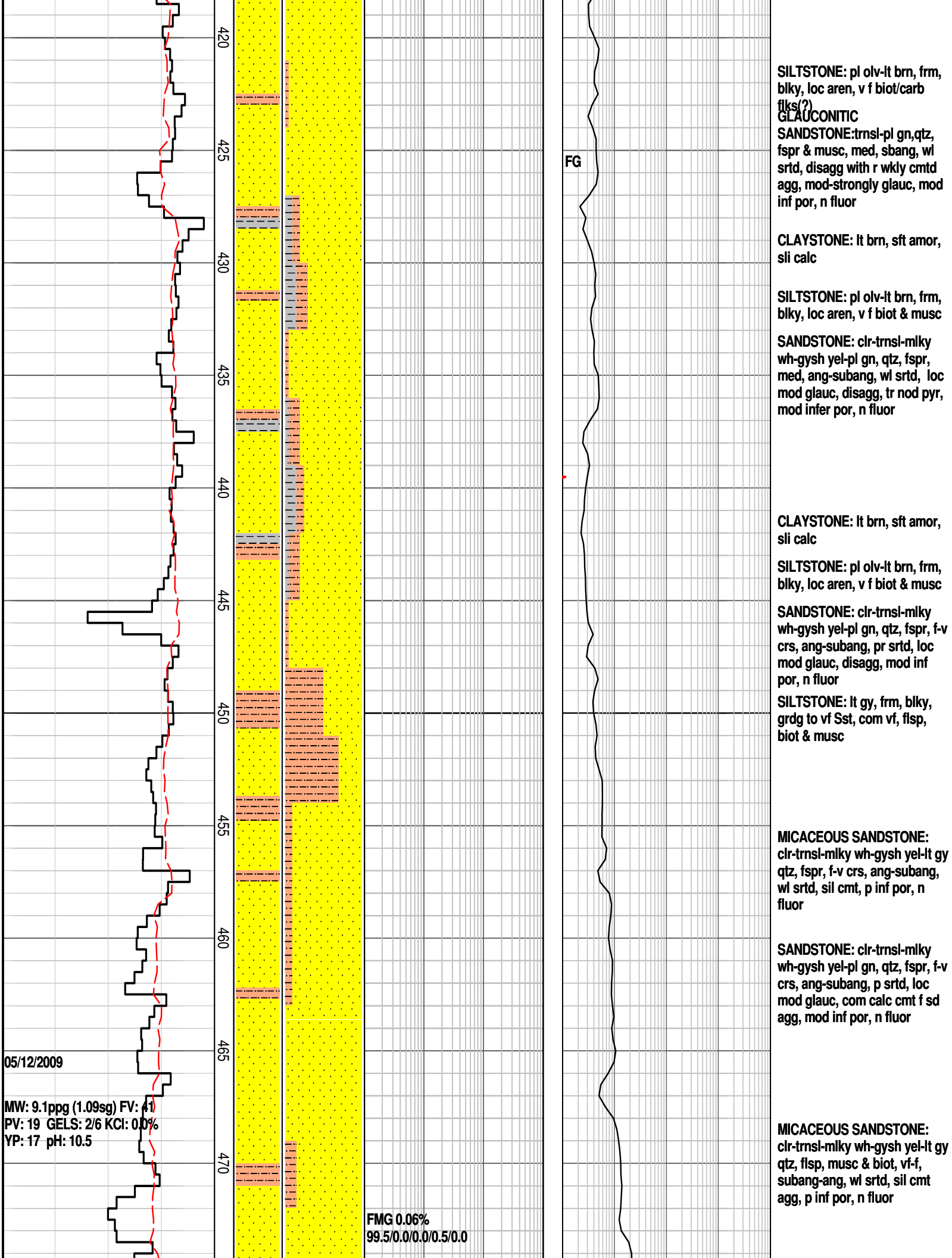
MICACEOUS SILTSTONE: gysh brn, musc-biot, sft-mod frm, sbblky

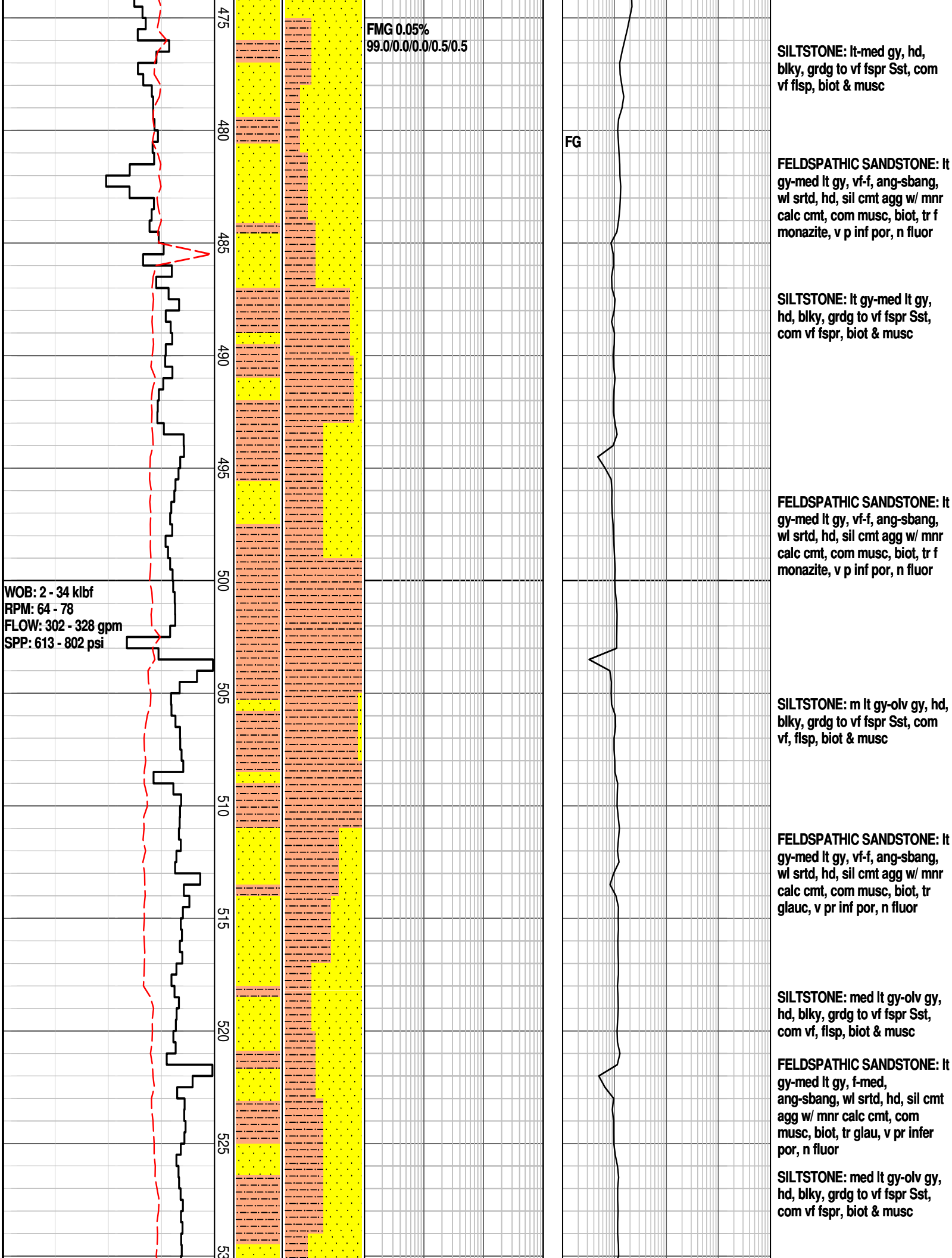
GLAUCONITIC SANDSTONE: trnsl- pl gn, qtz, fspr & musc, med-v crs, ang-sbang, p srted, disagg with r wkly sil-glauc cmtd agg, mod-strongly glauc, mod inf por, n fluor

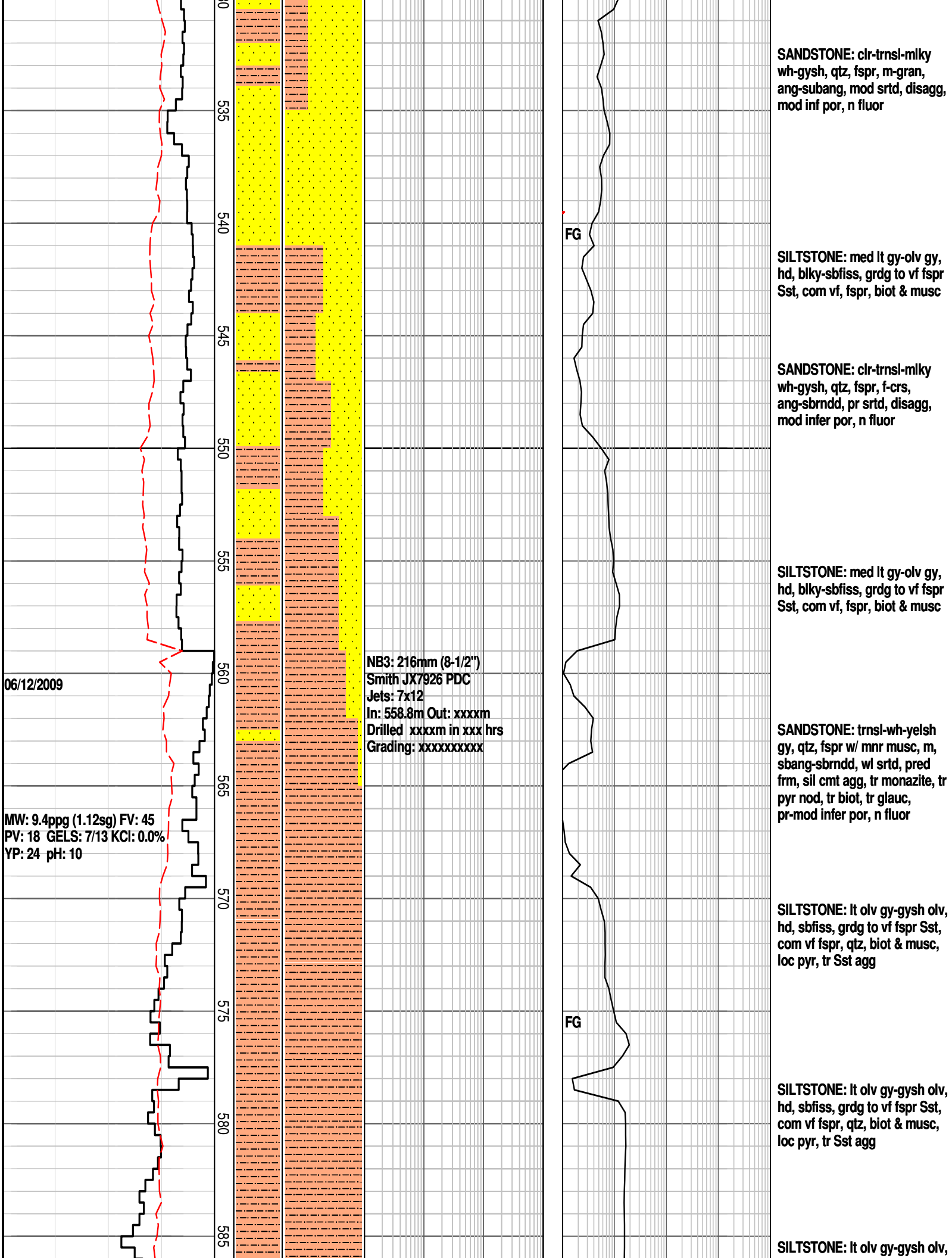
MICACEOUS SILTSTONE: mod yel-brn gy-pl gn (glauc), frm, sbblky-sbfis, loc calc

CLAYSTONE: lt brn, sft amor, sli calc

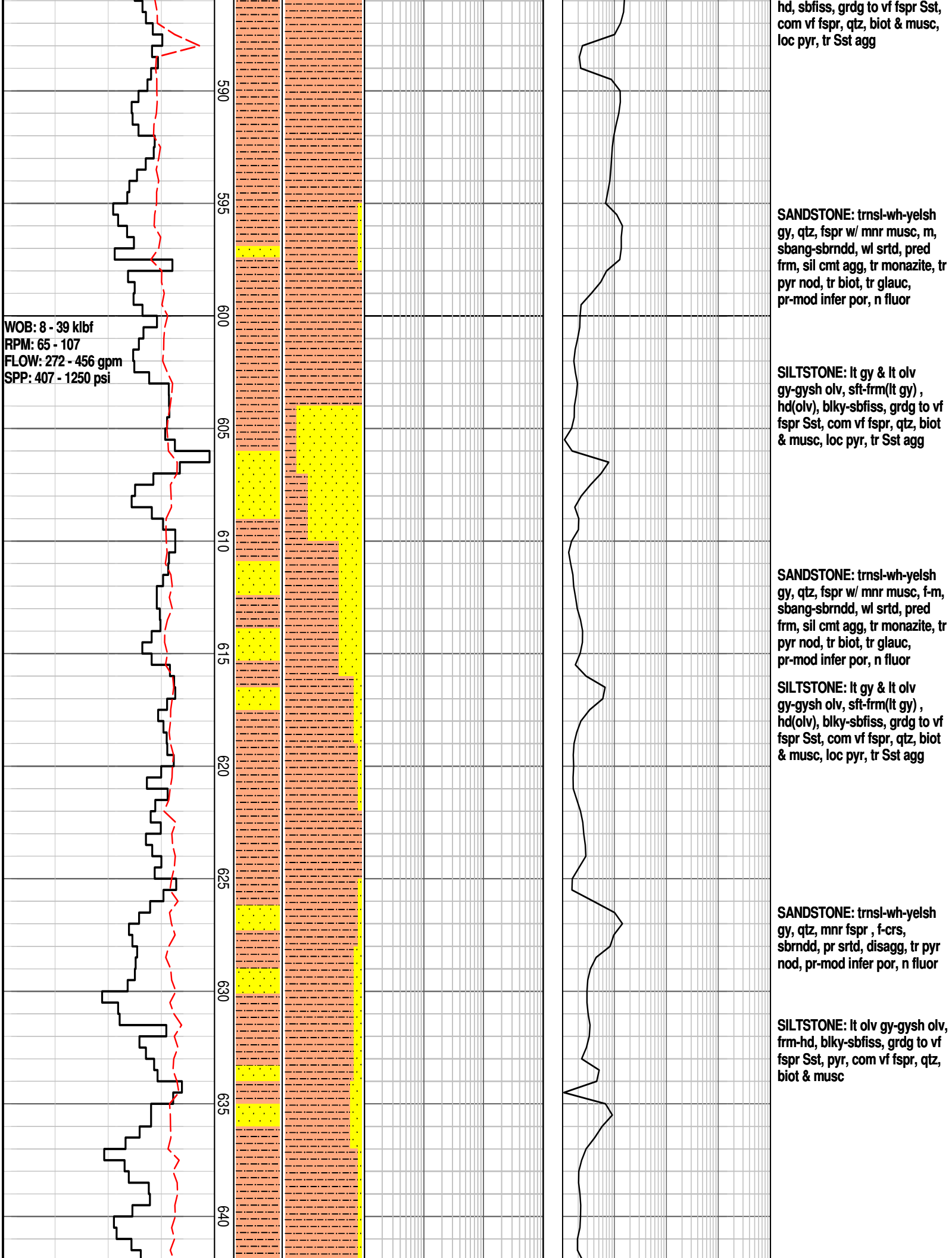
SANDSTONE: clr-trnsl-milky wh-gy yel-pl gn, qtz, fspr, med-crs, subang-sbrnodd, mod srted, loc glauc, disagg tr nod pyr, mod inf por, n fluor

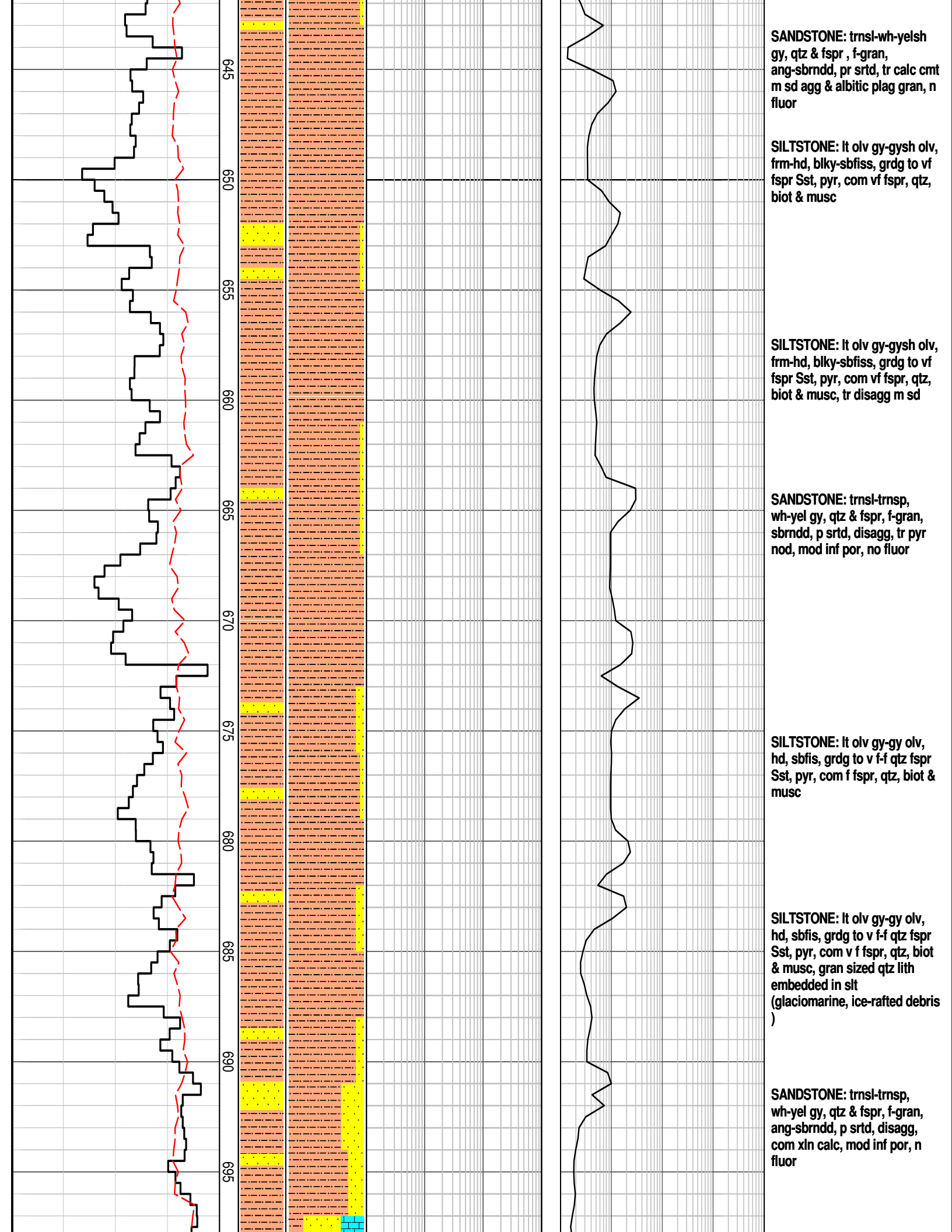






WOB: 8 - 39 klbf
RPM: 65 - 107
FLOW: 272 - 456 gpm
SPP: 407 - 1250 psi



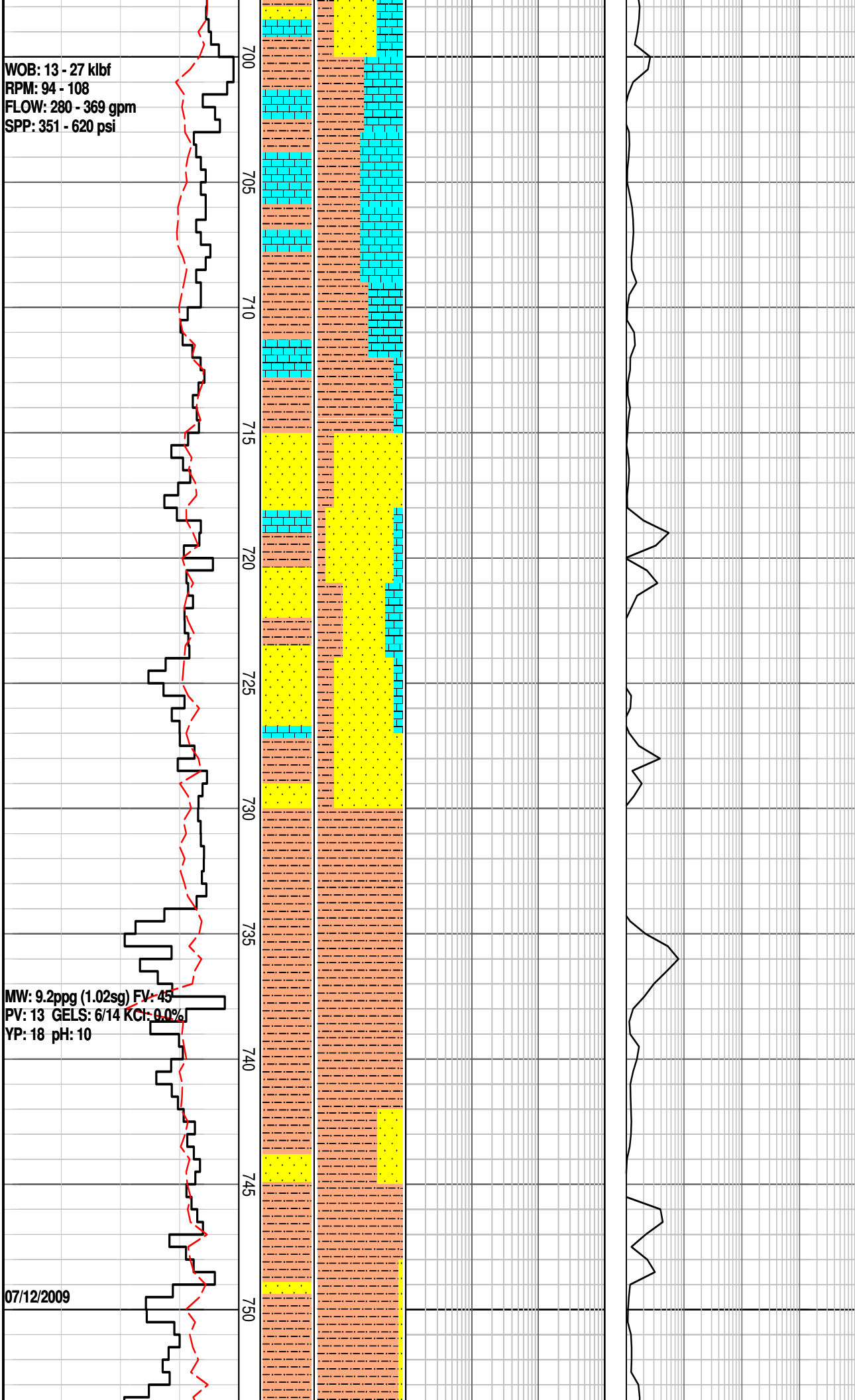


WOB: 13 - 27 klb
RPM: 94 - 108
FLOW: 280 - 369 gpm
SPP: 351 - 620 psi

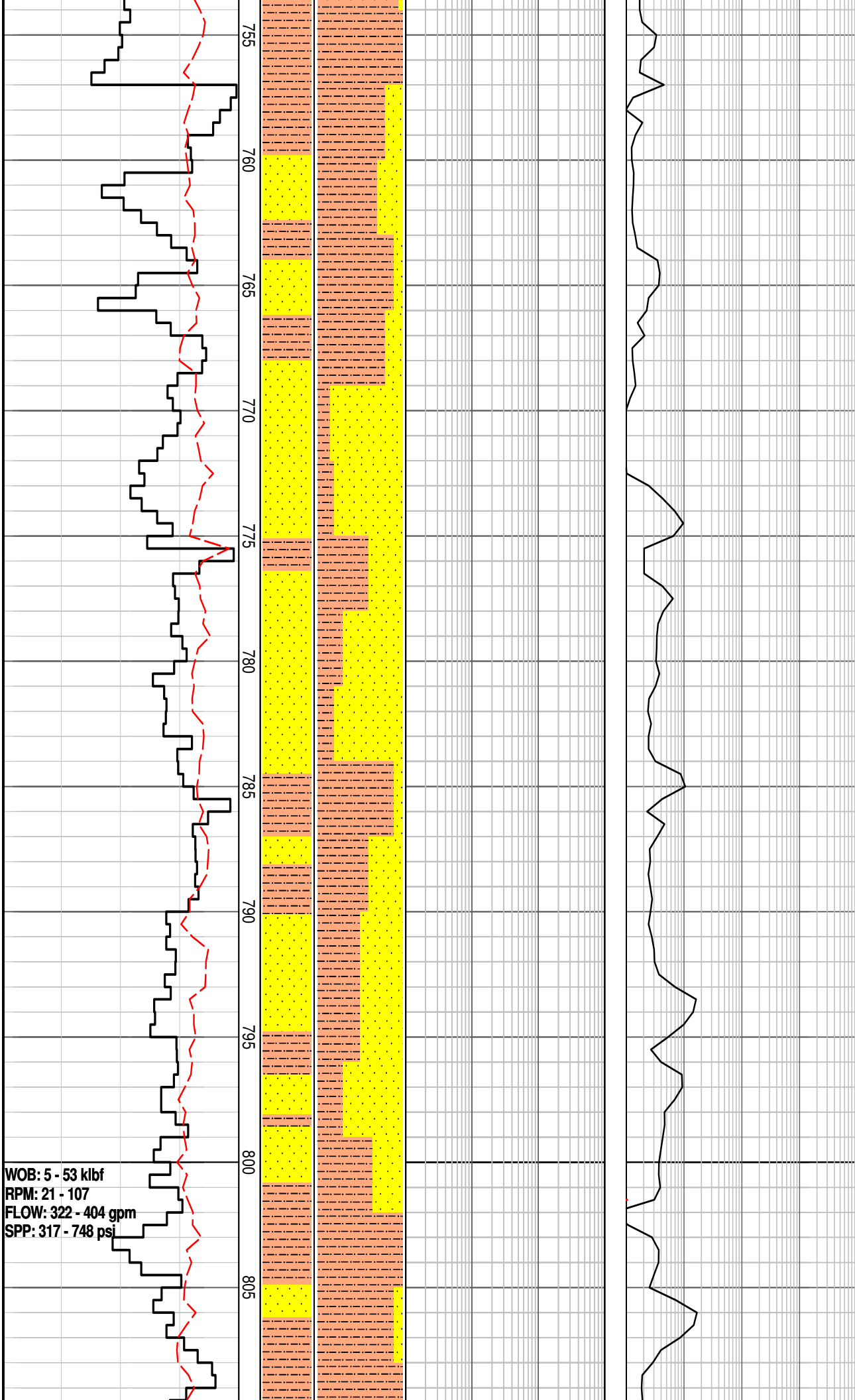
MW: 9.2ppg (1.02sg) FV: 45
PV: 13 GELS: 6/14 KCl: 0.0%
YP: 18 pH: 10

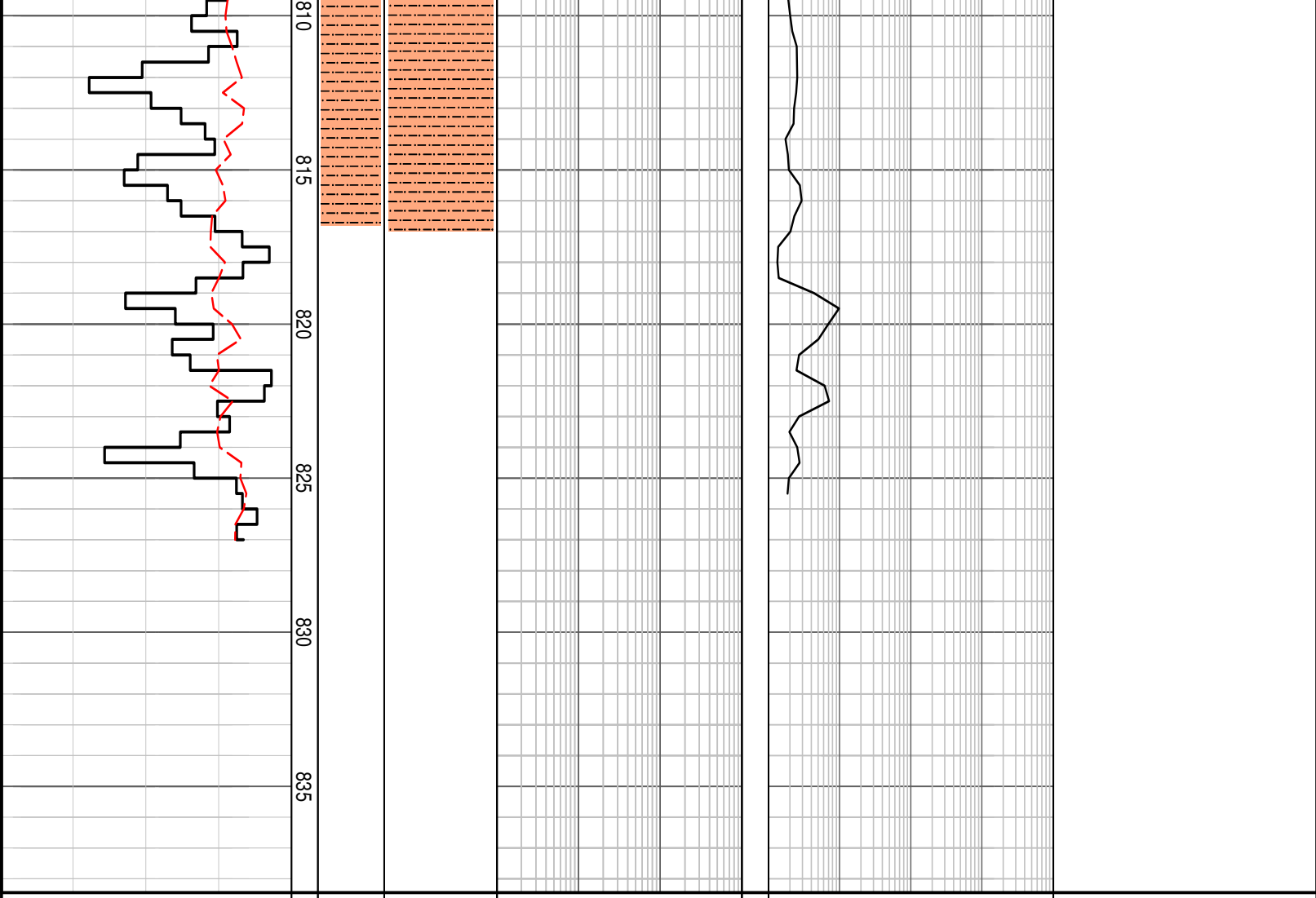
07/12/2009

LIMESTONE: gy yel-med yel,
loc dolo, loc rexln, foss with
com Crin & bivalve (clamus
sp?) frag



WOB: 5 - 53 klbf
RPM: 21 - 107
FLOW: 322 - 404 gpm
SPP: 317 - 748 psi





FORMATION EVALUATION LOG

CHROMATOGRAPH		OIL FLUORESCENCE	REMARKS
Methane			
ppm			
Ethane			
Propane			
iso-Butane			
n-Butane			
iso-Pentane			
n-Pentane			
ppm			
100 1000 10000 100000			
P F G			

TOTAL GAS & RESISTIVITY		LITHOLOGY %
Total Gas		
1 10 100		
%		
INTERPRETED LITHOLOGY		
CORE		
MD meters 1.200		

ROP		WOB
m/hr		
12.5		
37.5		
25		
50		
50		